

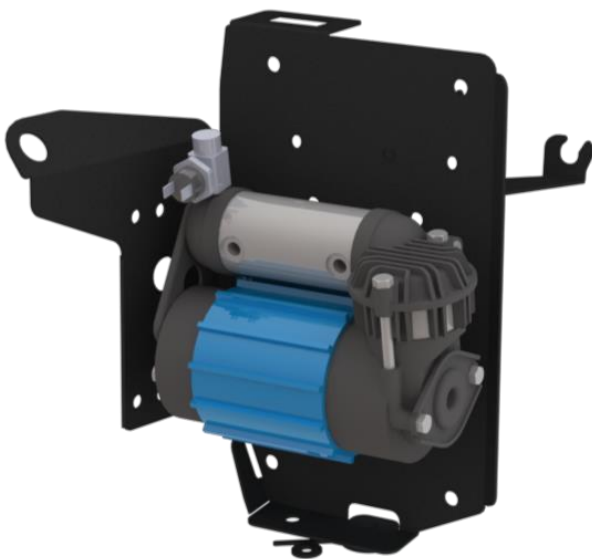


---

# AIR COMPRESSOR BRACKET SINGLE COMPRESSOR KIT

---

TLR683202



Suited to:

**LAND ROVER DEFENDER L663  
2021-Current**



## PRE-INSTALLATION



Read through this installation guide before proceeding.



Fitting time is approx. 60 minutes.



ARB single compressor and ARB Twin compressor models.



Tools: Allen Keys, 12mm drill (step drill), masking tape.

### FITTING KIT

QTY	PART
1	TLR683201-1 Main Bracket
1	TLR683201-2 Support Bracket
1	TLR683201-3 Cable Clip Bracket
1	SF27 - Tag Bolt
1	SF28 - Tag Nut
1	M6 x 18 mm Swaging Collar Stud
2	M6 x 20 mm SS Pan Phillips Head
3	M6 Nyloc Nut
5	M6 Flat Washer
2	Cable Tie 150 mm
1	CKMA12 - ARB Single Compressor
1	0740201 - Hose Reinforced JIC-04 0.3m
1	171302V2 - Pump up Kit
1	0740111 - Hose Coupling US STD JIC-4
1	740101 - Adapter 1/4 NPT (M) JIC-04(M)
1	740104 - Elbow JIC-04 (M) JIC-04(F)

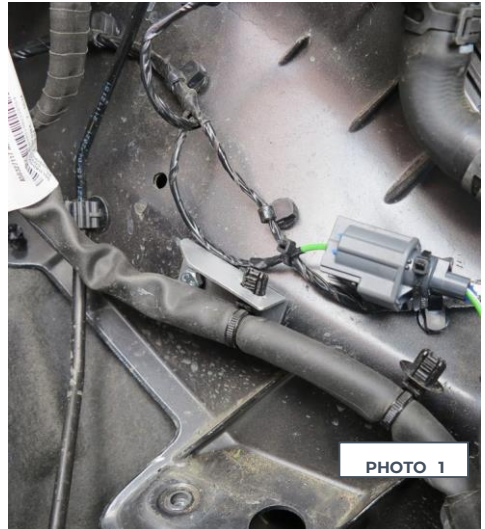
#### Note:

We recommend pre-running all the wiring before mounting bracket to the vehicle, and getting yourself familiar with which holes you will need to use to mount the compressor to the TLR Products Bracket.



## FITTING INSTRUCTIONS

1. Remove both OEM M6 bolts holding OEM electrical harness, unclip harness from the OEM bracket and mount TLR Products supplied electrical relocation bracket into place using 1 of the OEM M6 bolts removed. Re-fit harness to relocation bracket and cable tie OEM electrical Plug to harness above **Photo 1**.
2. Fit ARB air coupling and supplied air lines, fittings into place on main mounting bracket **Photo 2**.
3. Fit ARB Single Compressor to main mounting bracket using Hardware supplied with compressor and orientate as shown in Photo 2.





4. Fit TLR Products supplied M6 swaging stud into tag bolt plate

**Photo 3**

*Tip: you can use a small socket to space up the plate and tap the Stud in with a Hammer.*

5. Mount main bracket into place using OEM M6 bolt and TLR Products supplied SF27 tag bolt, Washer, and Nyloc Nut **Photo 4**  
*Note: tag bolt located up underneath mounting flange.*
6. Remove electric coolant pump from OEM bracket by lifting end of clip and sliding to release mounting lugs.
7. Loosen plastic coolant pump mounting bracket and fit TLR Products supplied support bracket in behind pump mounting bracket **Photo 5**

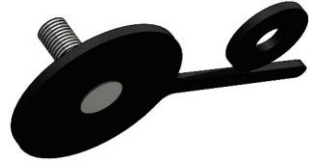


PHOTO 3



PHOTO 4



8. Fix Main mounting bracket and support together using TLR Products supplied M6 hardware.
9. Ensure all hardware is tightened and finalise fitting compressor.





## ARB Single Compressor



TLR Products  
65 Northville Drive  
Barnsley NSW 2278



[hello@tlrproducts.com.au](mailto:hello@tlrproducts.com.au)  
[www.tlrproducts.com.au](http://www.tlrproducts.com.au)



[instagram.com/tlrproducts](https://www.instagram.com/tlrproducts)  
[facebook.com/tlrproducts](https://www.facebook.com/tlrproducts)

---