

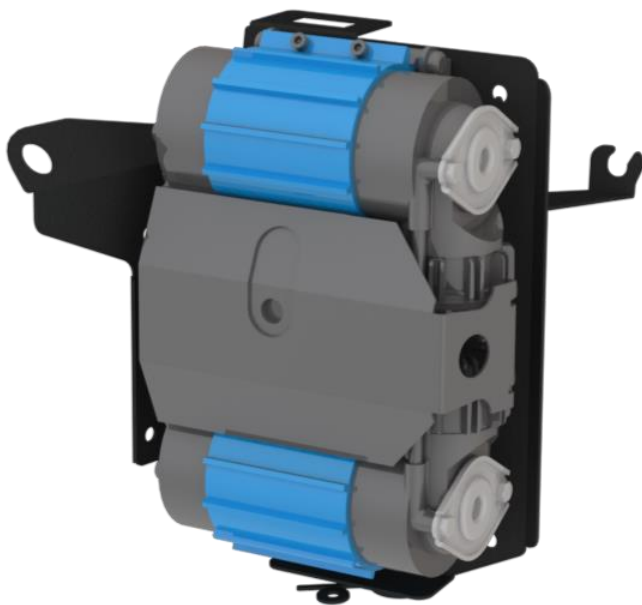


---

# COMPRESSOR BRACKET ARB TWIN COMPRESSOR KIT

---

TLR683203



suited to:

**LAND ROVER DEFENDER L663  
2021 - CURRENT**



## PRE-INSTALLATION



Read through this installation guide before proceeding.



Fitting time is approx. 60 minutes.



ARB single compressor and ARB Twin compressor models.



Tools: Allen Keys, 12mm drill (step drill), masking tape.

## FITTING KIT

QTY	PART
1	TLRLD21COMPENG - Main Bracket
1	TLRLD21COMPENGB1 - Bracket
1	TLRLD21COMPENGB2 - Bracket
1	SF27 - Tag Bolt
1	SF28 - Tag Bolt (supplied with bracket kit, although not required for this fitment)
1	M6 X 18 mm Swaging Collar Stud
2	M6 x 20 SS Pan Phillips Head
3	M6 SS Nyloc Nuts
5	M6 SS Flat Washer
2	Cable Tie 150 mm
1	CKMTA12 - ARB Twin Compressor
1	0740201 - Hose Reinforced JIC-04 0.3M
1	0740111 - Hose Coupling US STD JIC-4
1	740101 - Adapter 1/4 NPT (M) JIC-04(M)
1	740104 - Elbow JIC-04 (M) JIC-04(F)
1	171302V2 - Pump up Kit

### Note:

We recommend pre-running all the wiring before mounting bracket to the vehicle, and getting yourself familiar with which holes you will need to use to mount the compressor to the TLR Products bracket.

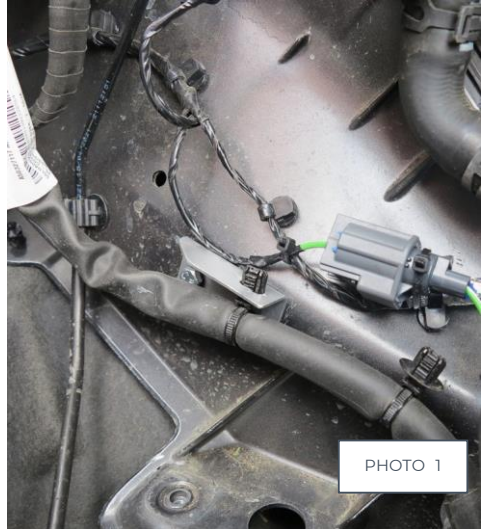


## FITTING INSTRUCTIONS

1. Remove both OEM M6 bolts holding OEM electrical harness, unclip harness from the OEM bracket and mount TLR Products supplied electrical relocation bracket into place using 1 of the OEM M6 bolts removed. Re-fit harness to relocation bracket and cable tie OEM electrical plug to harness above.

### **Photo 1**

2. Fit ARB Air coupling and supplied air lines, fittings into place on main mounting bracket.  
*Note: if fitting an additional manifold kit also fit this into place on the main mounting bracket with additional hoses and fittings supplied with manifold kit and set aside. **Photo 2.***





3. Fit TLR Products supplied M6 swaging stud into tag bolt plate **Photo 3**.

*Note: you can use a small socket to space up the plate and tap the stud in with a hammer.*

4. Mount main bracket into place using OEM M6 bolt and TLR Products supplied SF27 tag bolt, washer, and Nyloc nut **Photo 4**.

*Note: tag bolt located up underneath mounting flange.*

5. Lift ARB Twin Compressor into place and fit 2x M6 bolts supplied with compressor to the 2 mounting bolt locations second row from the bottom of the ARB Twin Compressor.

*Note: you may need to slightly bend the main bracket towards yourself to create more room for installing these bolts.*

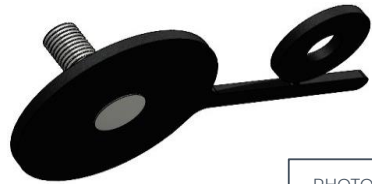


PHOTO 3

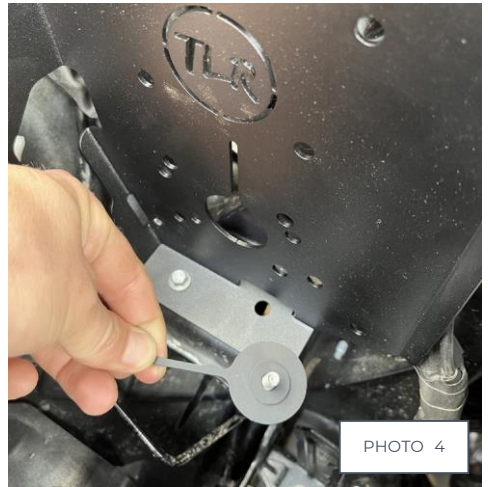
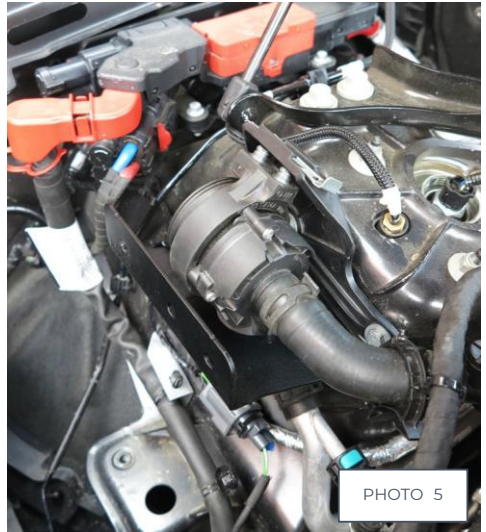


PHOTO 4



6. Remove electric coolant pump from OEM bracket by lifting end of clip and sliding to release mounting lugs.
7. Loosen plastic coolant pump mounting bracket and fit TLR Products supplied support bracket in behind pump mounting bracket, (Photo 5). Fit the top 2 M6 mounting bolts supplied with the compressor though both the support bracket and main mounting bracket
8. Ensure all hardware is tightened and finalise fitting compressor





**ARB Single Compressor**



**ARB Twin Compressor**



[hello@tlrproducts.com.au](mailto:hello@tlrproducts.com.au)  
[www.tlrproducts.com.au](http://www.tlrproducts.com.au)



[instagram.com/tlrproducts](https://www.instagram.com/tlrproducts)  
[facebook.com/tlrproducts](https://www.facebook.com/tlrproducts)



TLR Products  
65 Northville Drive  
Barnsley NSW 2278