

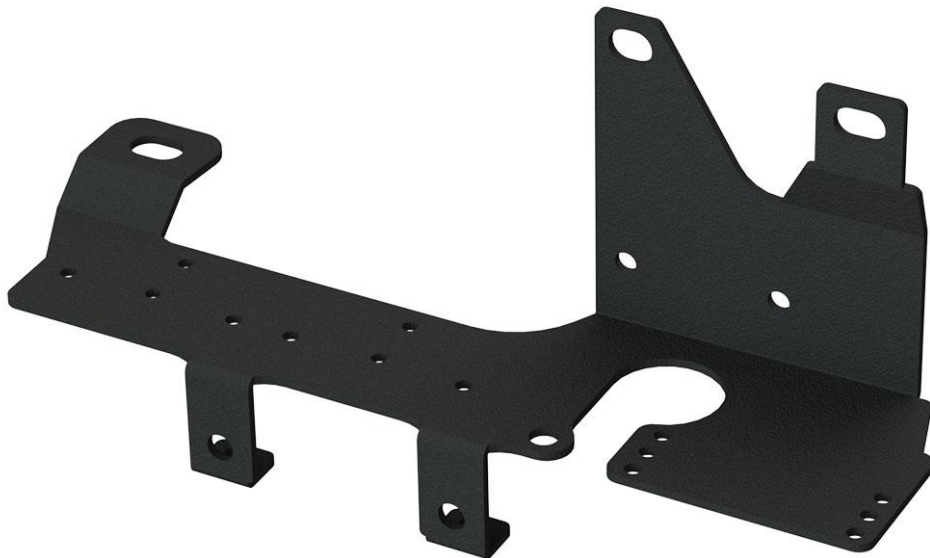


---

# MULTI TRAILER 3 PLUG BRACKET LEFT HAND SIDE

---

TLR712501



SUITED TO:  
**TOYOTA LANDCRUISER 300 SERIES**



## PRE-INSTALLATION



Read through this installation guide before proceeding.



Fitting time is approx. 30 minutes.



Basic spanner and socket set, Allen keys, Torx set

FITTING KIT	
QUANTITY	PART
1	TLR712501 – Multi Trailer Plug Bracket
1	TLR710010 - Camera Plug Bracket
1	TLR710008 - Adapter Plate
4	M4 x 20 mm SS Pan Phillips Head
2	M4 x 15 mm SS Pan Phillips Head
2	M4 x 10 mm SS Pan Phillips Head
8	M4 SS Nyloc Nut
1	Cable Tie 150 mm

### NOTE:

This TLR Products Multi Trailer Plug Bracket is designed to mount to existing mounting bolts located in the OEM trailer plug location on the left hand side

This TLR Products bracket allows for mounting 7/12 pin, 2 x Anderson plugs, 1 x camera outlet, airbags, trailer break away.



## FITTING INSTRUCTIONS

1. Confirm which plugs will be fitted and the location of each plug  
*Note: we recommend wiring all plugs before fitting them to the TLR Products Bracket.*
2. Fit air bag valves if required.
3. Fit all required plugs to the TLR Products bracket using the M4 hardware supplied.  
*Note: if fitting a safety-dave style camera plug, this mounts to the supplied adapter bracket using the cable tie supplied, Photo 1.*
4. Remove the OEM mounting bolts from the rear passenger side of the vehicle **Photo 2**.
5. Fit TLR Products mounting bracket into place using OEM bolts removed in previous step. **Photo 2**



PHOTO 1

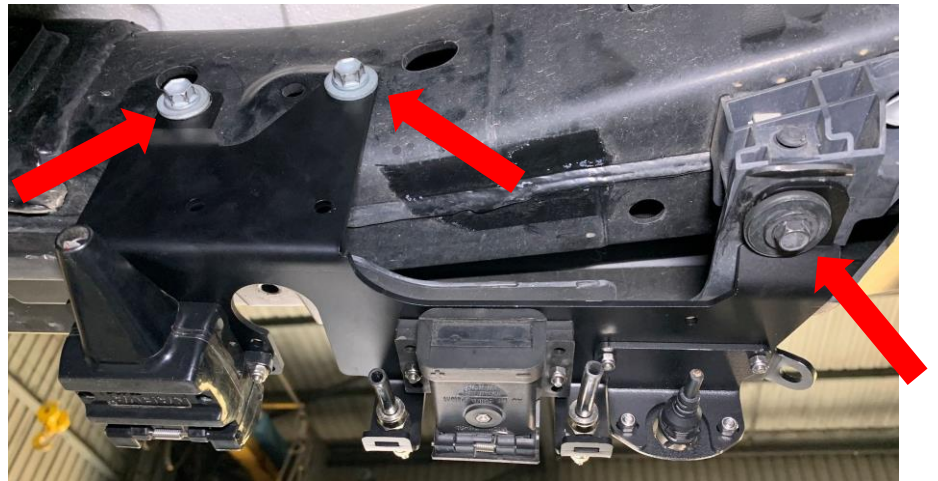


PHOTO 2



hello@tlrproducts.com.au  
www.tlrproducts.com.au



instagram.com/tlrproducts  
facebook.com/tlrproducts