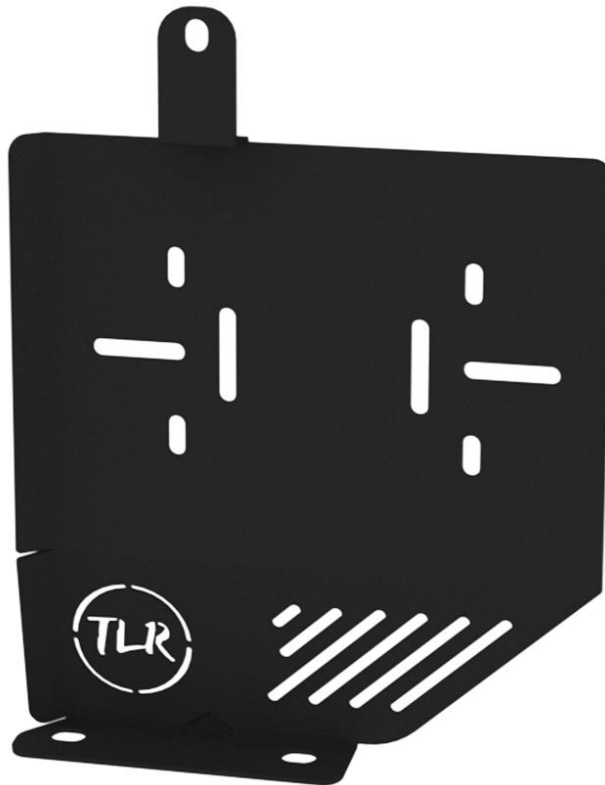




UHF BRACKET BEHIND DASH

TLR745101



SUITED TO:

GWM TANK 300



PRE-INSTALLATION



Read through this installation guide before proceeding.



Fitting time is approx. 45 minutes.



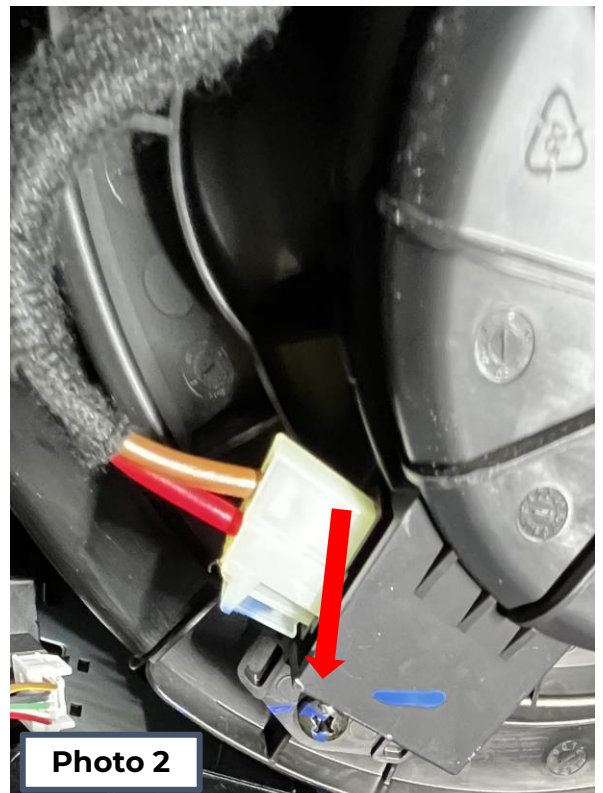
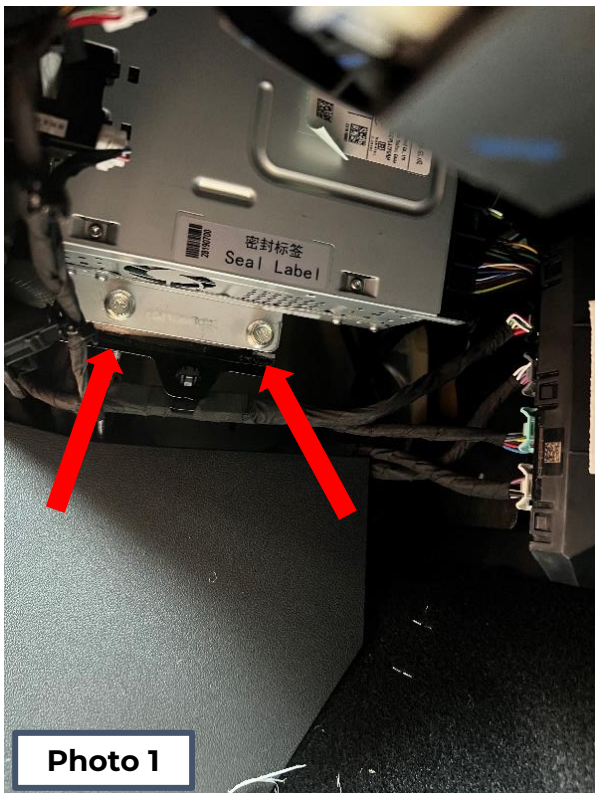
Spanner
Socket Set
Phillips Head
Screwdriver

FITTING KIT

QUANTITY	PART
1	TLR745101 – UHF Bracket
4	M4 x 10 mm Phillips Head Bolts - Stainless steel
4	M4 Nyloc Nuts – Stainless steel
2	150 mm Cable ties

NOTE:

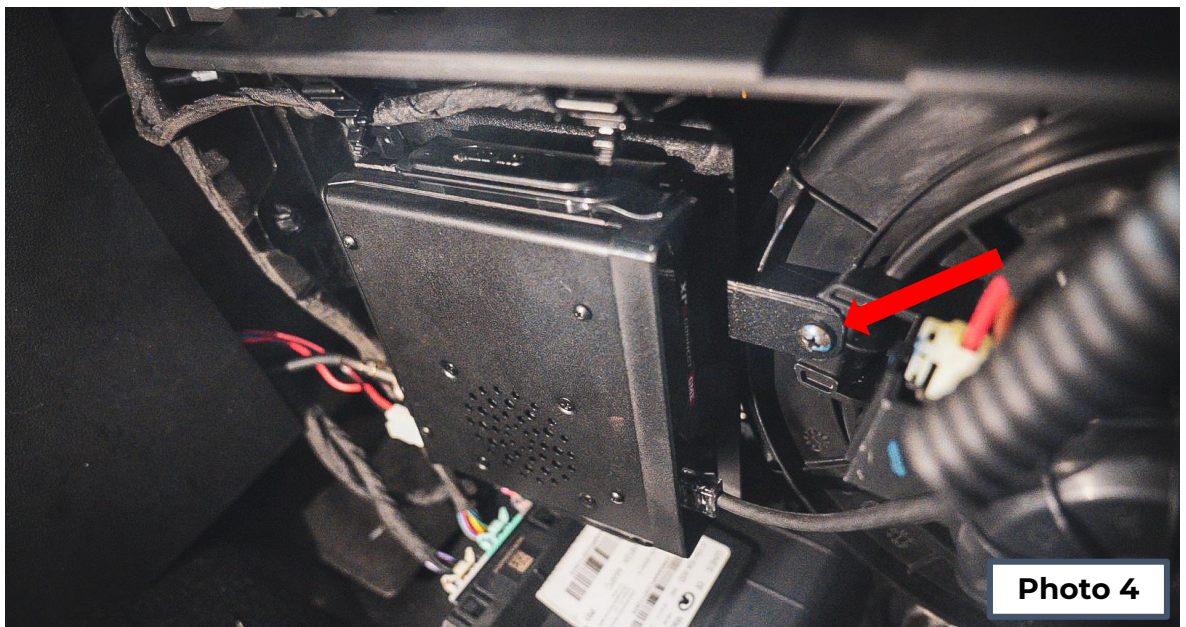
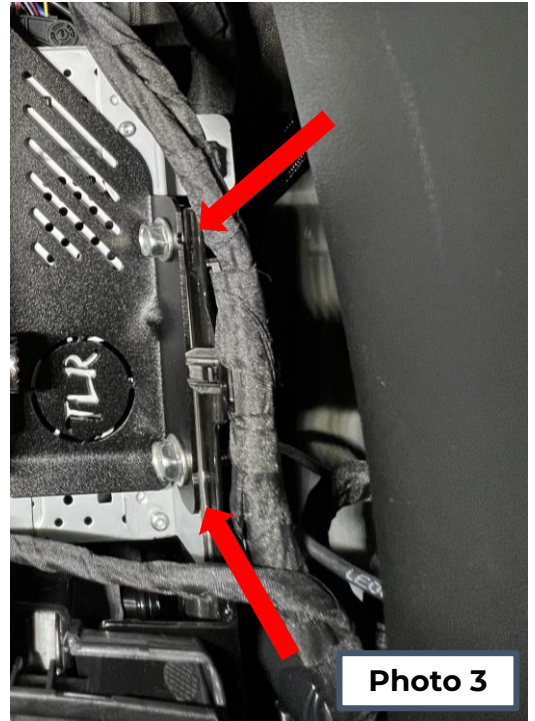
This UHF Module Bracket mounts under the passenger side glove box.





FITTING INSTRUCTIONS

1. Remove the 2 x OEM electrical module mounting bolts *shown in Photo 1.*
2. Remove 1 x Screw shown in *Photo 2.*
3. Mount the UHF unit to the TLR Products bracket and orientate with antenna input facing towards outside of vehicle (*M4 hardware has been supplied for some installations.*)
4. Place assembly in position and install the Previously removed OEM bolts as seen in *Photo 3 and 4.*
5. Complete all necessary wiring to complete installation.



hello@tlrproducts.com.au
www.tlrproducts.com.au



instagram.com/tlrproducts
facebook.com/tlrproducts