



AERIAL BRACKET REAR DOOR

TLR745102



SUITED TO:

GWM TANK 300



PRE-INSTALLATION



Read through this installation guide before proceeding.



Fitting time is approx. 30 minutes.



Spanner Socket Set
Masking Tape

FITTING KIT

QUANTITY	PART
1	TLR745102-1 – Main Mounting Bracket
1	TLR745102-2 – Gusset Bracket
1	M6 x 12 mm Button Head Stainless Steel
1	M6 Nyloc Nut Stainless Steel
1	Cable Tie 150 mm



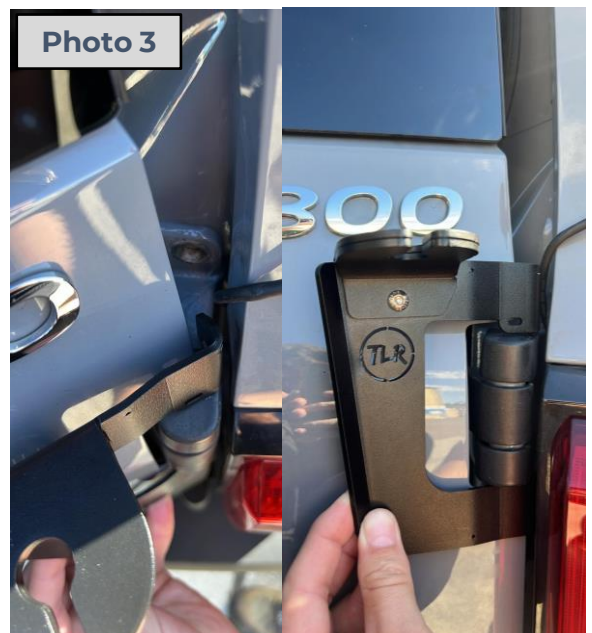
NOTE:

This Aerial Bracket is designed to mount to the top right-hand side rear door hinge of the GWM Tank 300.



FITTING INSTRUCTIONS

1. Assemble the TLR Products Aerial Brackets together using the M6 Stainless steel hardware supplied as Refer to Photo 1.
2. Remove both outer door hinge mounting bolts, Refer to Photo 2.
3. Place TLR Products Aerial Bracket into position. This is done by opening the door roughly halfway and manoeuvring the bracket around the door hinge. Refer to photo 3.
4. Loosely re-fit the OEM hinge mounting bolts to hold the mounting bracket in place.
5. Install the Aerial of choice to the mounting bracket and feed the coaxial cable around the top and down behind the OEM hinge. Secure the cable in place using the cable tie provided. Refer to Photo 4





- 5. Ensure to hold the mounting bracket firmly against the body work of the vehicle and tighten mounting bolts, this is necessary to ensure adequate clearance on the rear door.
- 6. Carefully poke a hole through the rubber electrical grommet, this allows access into the vehicle to run the cable down to the UHF module. Refer to photo 5.



Photo 4

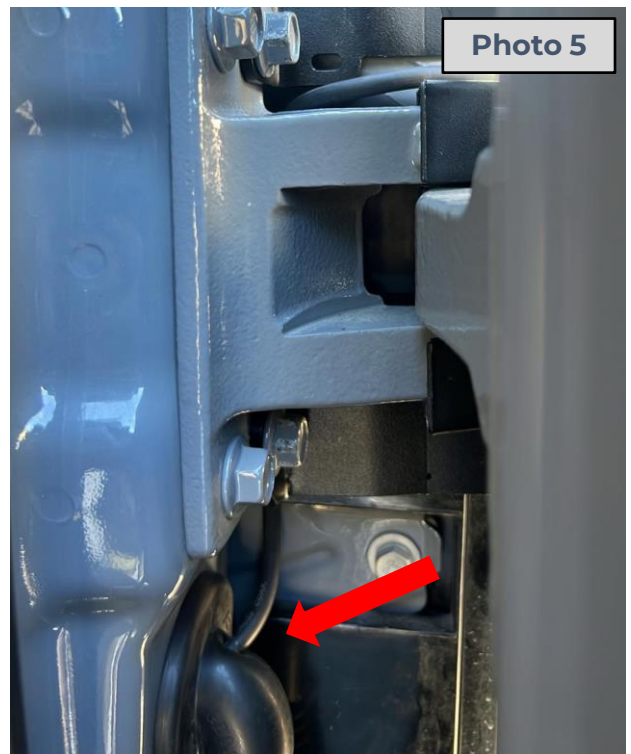


Photo 5



[instagram.com/tlrproducts](https://www.instagram.com/tlrproducts)
[facebook.com/tlrproducts](https://www.facebook.com/tlrproducts)



hello@tlrproducts.com.au
www.tlrproducts.com.au



TLR Products
65 Northville Drive
Barnsley NSW 2278