

## Electrical Switch Mount – Centre Console to suit Ford Ranger/Ranger Raptor/Everest Next Gen Series

TLR Products Electrical Switch Mount is designed to mount to the center console on a Ford Ranger / Everest / Ranger Raptor with the 12-inch touch display screen.

This mount is the perfect addition to provide a mounting location for up to 4x accessory switches without the need for any modification or drilling of holes which affect the interior of the vehicle.

The Switch Cutouts are 20 x 27 mm and are design to suit the OE style Toyota Landcruiser 200 series switches.

### Compatible Models include:

- Ford Ranger Wildtrak
- Ford Ranger Platinum
- Ford Ranger Raptor
- Ford Everest Trend
- Ford Everest Sport
- Ford Everest Platinum

### Features:

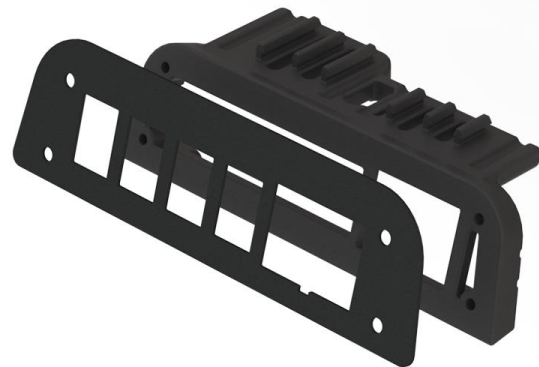
- Base mount manufactured from lightweight durable ABS Plastic
- Stainless steel facia plate powder coated in a textured black finish for added aesthetics.
- Accommodates OE style Toyota 200 series switches.
- Utilises the OEM USB plug

### Includes:

- 1 x TLR Products Electrical Switch Mount.
- 1 x Comprehensive fitting kit with all components required for fitment.

### Note:

- Weight: .04 kg
- Dimensions: 210 x 70 x 60 mm
- Warranty: 1 years
- Fitting time: 10 min
- All Electrical Switches sold separately.



TLR Products is Australian owned, with all manufactured products designed and made in Newcastle, NSW.