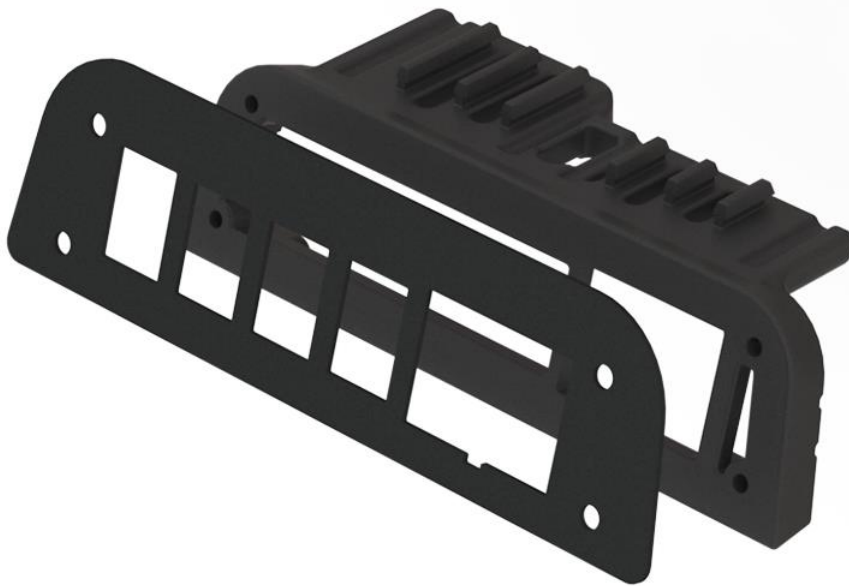




ELECTRICAL SWITCH MOUNT CENTER CONSOLE

TLR704001



SUITED TO:

**FORD RANGER/RANGER RAPTOR/ EVEREST
NEXT GEN SERIES**



PRE-INSTALLATION



Read through this installation guide before proceeding.



Fitting time is approx. 20 minutes.



Screwdriver, Allen key, Plastic trim removal tool

FITTING KIT

QUANTITY	PART
1	TLR704001-1 – Plastic Mounting Bracket
1	TLR704001-2 – Stainless Face Plate
4	M4 x 16 SS Button Head (powder-coated head)
4	M4 SS Nyloc Nut
1	6mm Foam Bedding Tape (350mm)



NOTE:

This Mount is Designed to suit all Next Gen variants which are fitted with the 12-inch Centre LCD Touchscreen, This includes: Ford Ranger Wildtrak / Platinum and Raptor variants and Ford Everest Trend/ Sport and Platinum Variants.



FITTING INSTRUCTIONS

1. Install 4x M4 Nyloc Nuts into TLR Products Plastic Mount **as per Photo 1**.
NOTE: It is recommended to use a small screwdriver to push nuts down into position.
2. Install supplied Foam Bedding Tape around outside edge of Facia Plate **as per Photo 2**.
3. Remove OEM USB Electrical Plug shown in **Photo 3** and disconnect the 2 x plugs from back.
NOTE: Ensure cables do not fall back into opening.
4. Hold TLR Products Plastic Mount in place and firmly push up into vent holes to clip into place.
NOTE: it is made easier by slightly pushing the back up into place first.
5. Install the Facia Panel onto the mount by loosely fitting all 4x mounting bolts supplied. **As per Photo 4**
6. Plug the cables back into the USB plug and install into the TLR Products bracket
7. Install all other switches and tighten mounting screws to finalise installation.



hello@tlrproducts.com.au
www.tlrproducts.com.au



instagram.com/tlrproducts
facebook.com/tlrproducts