

Electrical Accessory – Fuse Bracket to suit Most OEM & Auxiliary Battery Clamp Bolts

This TLR Products Accessory Fuse Bracket is a neat and simple solution to provide mounting locations for electrical accessories.

The bracket is designed to suit various universal applications and locates on the battery clamp bolt of most OEM and Auxiliary Batteries, the bracket can also be flipped either way to provide a different offset if required.

The pre-cut holes allow for fitting up to 4 Midi Fuse Holders, confirmed fuse holder types:

- Bussmann Midi Fuse Module.
- OEX Midi Fuse Module.
- OEX Twin Midi Fuse Module
- MTA Midi Fuse Module

Features:

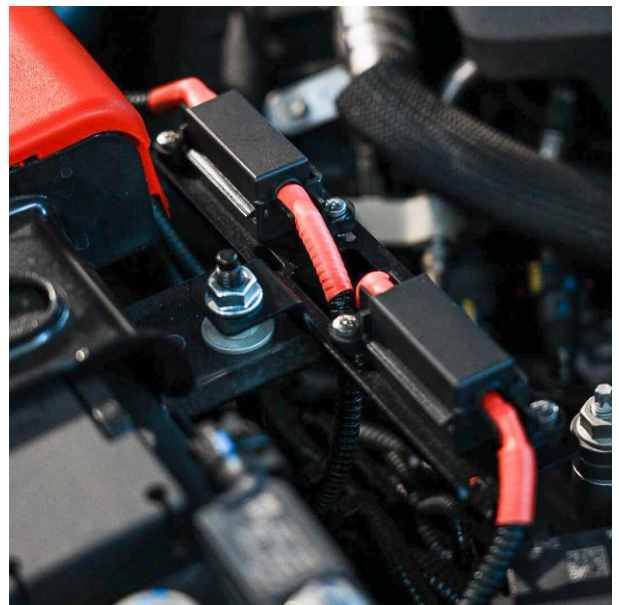
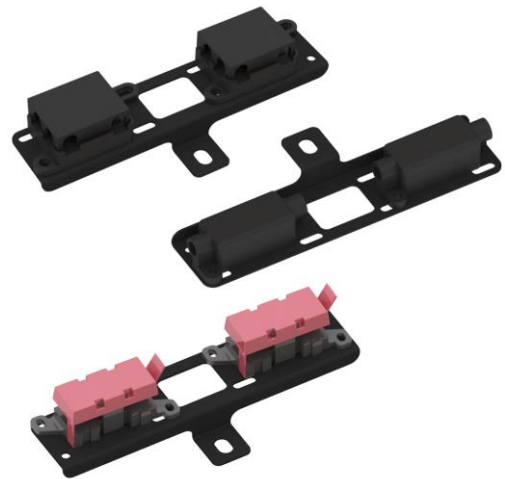
- Laser cut from 1.5 mm stainless steel.
- Powder coated in a black textured finish for added corrosion resistance.
- Easy fitment mounts to existing mounting bolts.

Includes:

- 1 x TLR Products Electrical Accessory Bracket

Note:

- Weight: 0.2 kg
- Dimensions: 190 x 70 x 20 mm
- Warranty: 3 years
- Fitting time: 10 mins
- Bracket only. All accessories sold separately.



TLR Products is Australian owned, with all manufactured products designed and made in Newcastle, NSW.