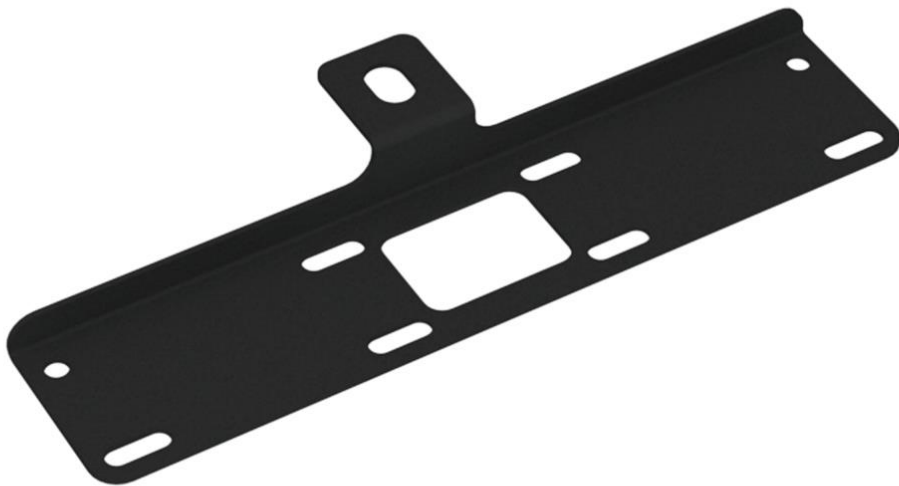




ELECTRICAL ACCESSORY FUSE BRACKET

TLR810019



SUITED TO:

**UNIVERSAL FITMENT
FITS MOST OEM AND AUXILIARY BATTERY
CLAMPS BOLTS**



PRE-INSTALLATION



Read through this installation guide before proceeding.

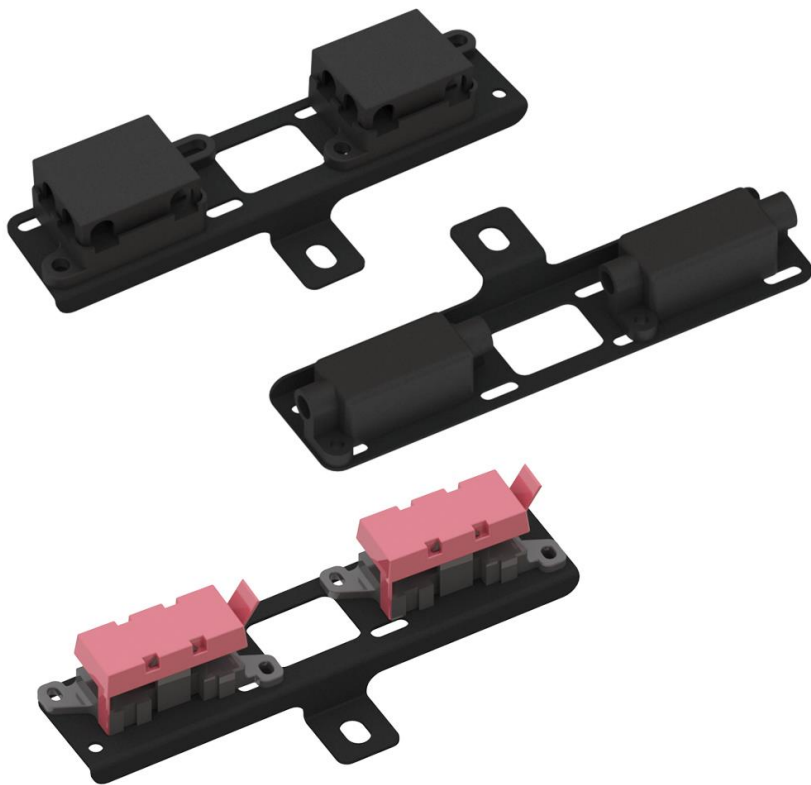


Fitting time is approx. 10 minutes.



Spanner
Socket Set
Phillips Head
Screwdriver

FITTING KIT	
QUANTITY	PART
1	TLR810019 – Electrical Accessory Bracket



NOTE:

This TLR Products Bracket is designed to suit various universal applications and locates on most OEM and Auxiliary battery clamp bolts.

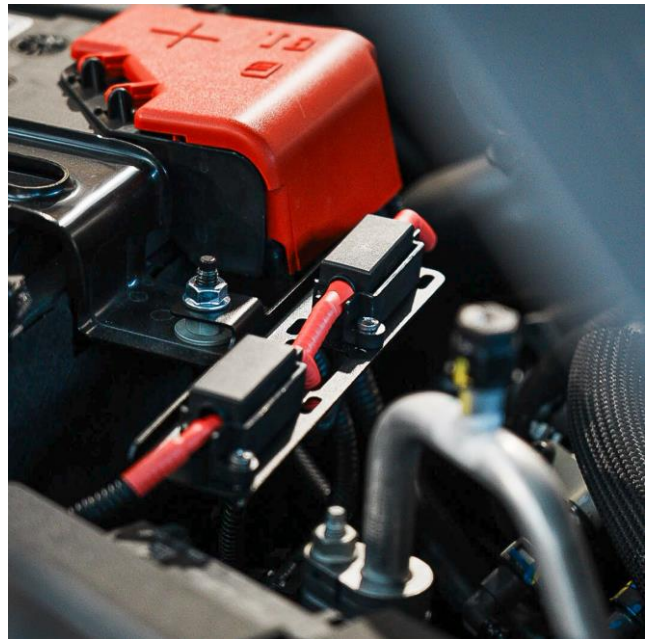


FITTING INSTRUCTIONS

1. Confirm which components and orientation is to be used and assemble components onto TLR Products Bracket.

NOTE: Double check clearances before connecting power and tightening fixings.

2. Install Mounting Bracket to chosen location.



[instagram.com/tlrproducts](https://www.instagram.com/tlrproducts)
[facebook.com/tlrproducts](https://www.facebook.com/tlrproducts)



hello@tlrproducts.com.au
www.tlrproducts.com.au



TLR Products
65 Northville Drive
Barnsley NSW 2278