

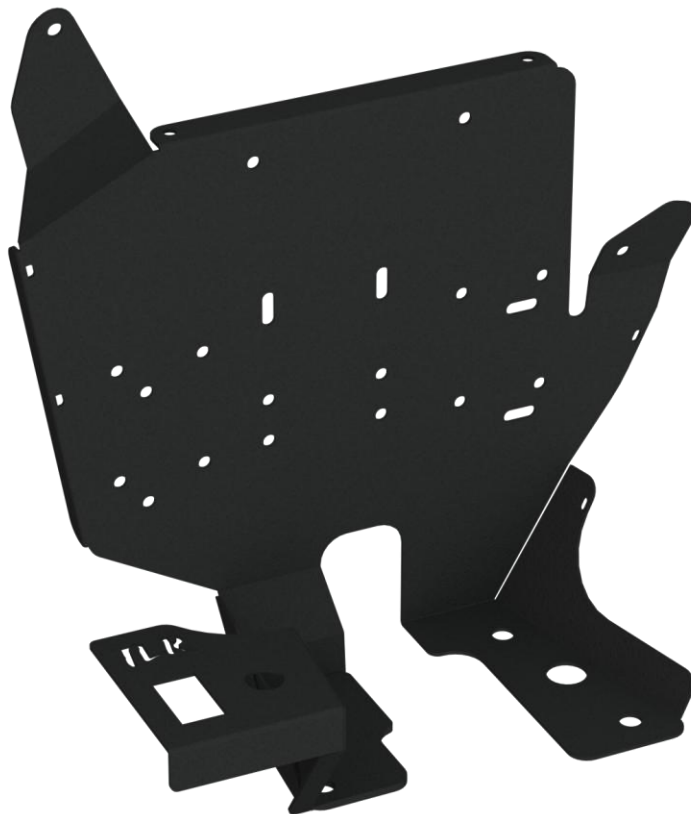


---

# AIR COMPRESSOR BRACKET INNER GUARD

---

TLR682103



SUITED TO:

**TOYOTA PRADO 250 SERIES**



# PRE-INSTALLATION



Read through this installation guide before proceeding.



Fitting time is approx. 30 minutes.



Spanner, socket set, Trim Removal Tool Body Saw/Multitool

## FITTING KIT

QUANTITY	PART
1	TLR682103-1 Main Compressor Bracket
1	TLR682103-2 Switch and Coupling Mount
4	M8 x 25 mm Hex Head Bolt ZP
4	M8 x 20 mm Flat Washer ZP
4	M8 Spring Washer ZP
1	M6 x 20 mm Hex Head Bolt ZP
1	M6 x 19 mm Flat Washer ZP
1	M6 Spring Washer ZP
1	JIC4(M) – ¼ NPT(M) Elbow #0740110
1	12 x 7mm Rubber Pinch Weld x 1,000mm
1	TLR682103 Plastic Cut Template

Other components required for complete fitment:

- 1x ARB Hose Reinforced JIC4 x 300mm #0740201.
- 1x ARB Elbow JIC4 #0740104.
- 1x ARB Pump Up Kit STD high Temp V2 Orange #171302V2.
- 1x ARB Air Coupling #0740111
- 1x ARB Air Compressor of Choice.

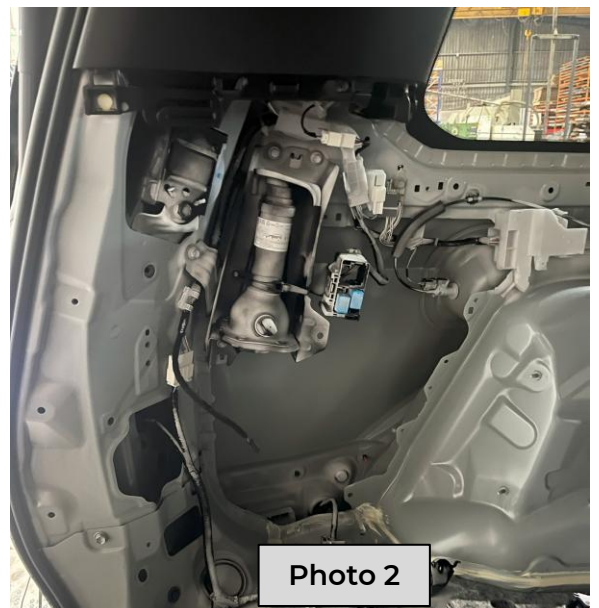


## FITTING INSTRUCTIONS

1. Remove the LH side rear interior trim panel to access the inner guard area. This is done by removing the 3 x M6 mounting bolts from the locations shown **BLUE**. Removal of 2<sup>nd</sup> row seatbelt bolt shown in **RED** and rubber door seal around rear and passenger door section. Refer to Photo 1



2. Remove both the rear and left-hand side floor trim panels to expose the lower section of the interior trim panel.
3. Carefully unclip the trim panel from the body by pulling the panel away from the body to release the plastic retaining clips.
4. Prior to complete removal of the panel, ensure to unplug the electrical plugs for both the power outlet and the rear interior light.





5. Refer to Step A if installing Air compressor bracket only OR Step B if also installing the Air tank kit (TLR682106).
  - A. Remove the M6 lower jack mounting bracket bolt as per Photo 3.
  - B. Completely remove the jack assembly by removing all jack housing mounting bolts, Refer to Photo 4 and TLR682106 instructions for reference.
6. To continue air compressor bracket installation. Mount the Air Compressor of choice to the mounting bracket, See Photo 5 for example.

*NOTE: There are mounting provisions to suit both versions of ARB brushed and brushless compressors.*
7. If installing an air manifold, there are mounting provisions for this located on the backside of the TLR Products compressor bracket.

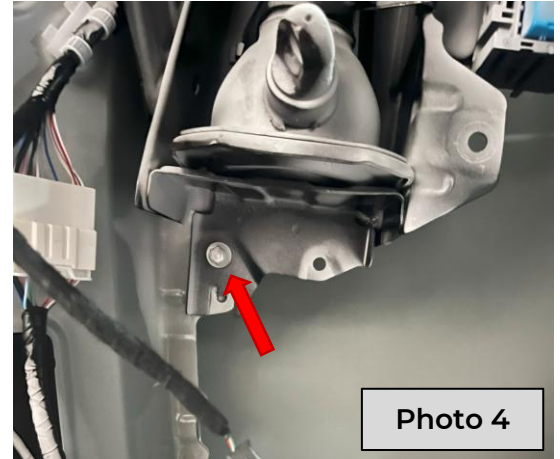
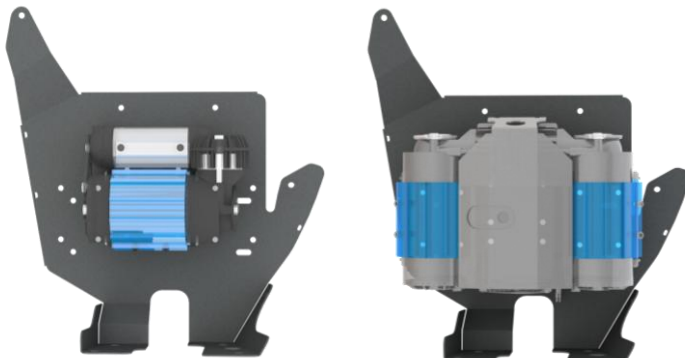


Photo 4

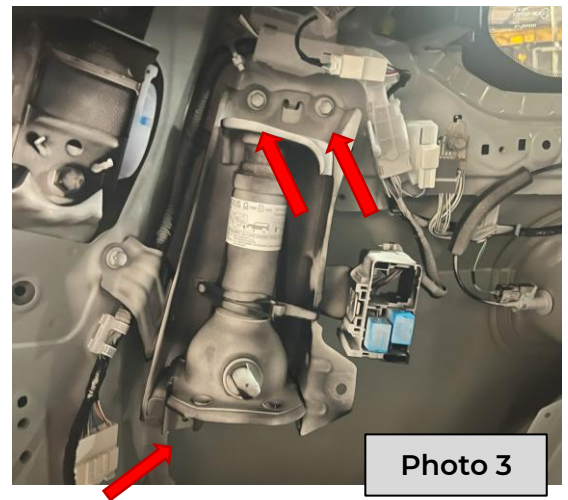


Photo 3

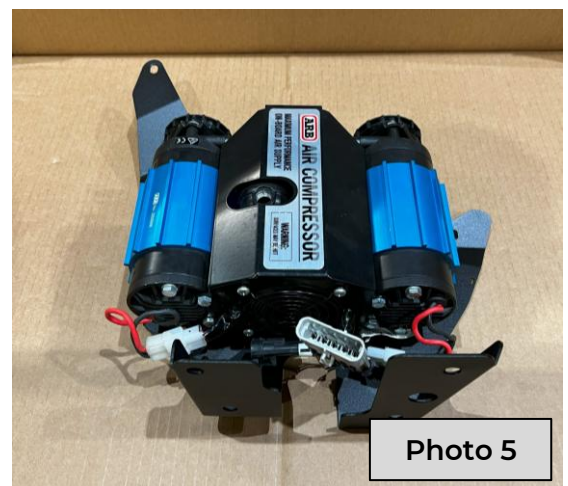


Photo 5

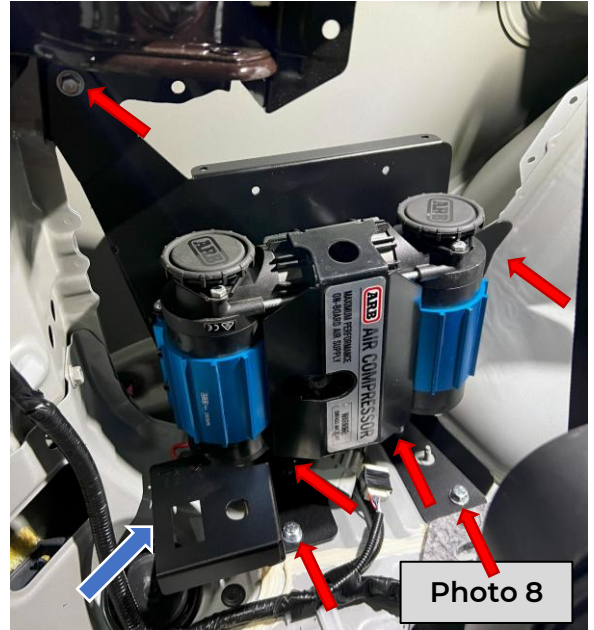




8. Position the assembled compressor and mounting bracket into the inner guard cavity and align with the M8 and M6 captive nuts located in the floor and body flange indicated by the **RED** arrows. See Photo 6.
9. If using the Switch and Coupling Bracket supplied with the compressor bracket set, position this over the 2x M8 captive nuts located in the floor, see **BLUE** arrow and Photo 6.

*NOTE: if you are installing the Air Tank Mounting Bracket (TLR682106) the Switch and Coupling Mount referred to in step 9 is "Not Required" as the Air Tank bracket set includes a high mounted switch and coupling mount which located up inside the jack opening.*

10. Install the JIC4(M) x 1/4" NPT fitting supplied with kit to the outlet of the air compressor.
11. If using the standard switch and coupling mount supplied with the bracket set, install the Switch and Coupling. Complete all plumbing and wiring of the Air Compressor, you will need to use a 90-degree elbow fitting for the coupling mount.





12. Using the Supplied Cut template with the compressor bracket, Mark Out the relevant cut line for your chosen compressor and coupling preference and neatly cut the plastic inner storage compartment to suit and install supplied pinch weld around cut edge. See photo 7 for example of cut used for ARB Brushed twin and standard switch and coupling mount.

NOTE: If you are installing the Air Tank, Refer to the relevant instructions to continue installation of the air tank.

13. If you are only installing the compressor bracket, re install the all the interior trim components to finalise installation.



[instagram.com/tlrproducts](https://www.instagram.com/tlrproducts)  
[facebook.com/tlrproducts](https://www.facebook.com/tlrproducts)



[hello@tlrproducts.com.au](mailto:hello@tlrproducts.com.au)  
[www.tlrproducts.com.au](http://www.tlrproducts.com.au)